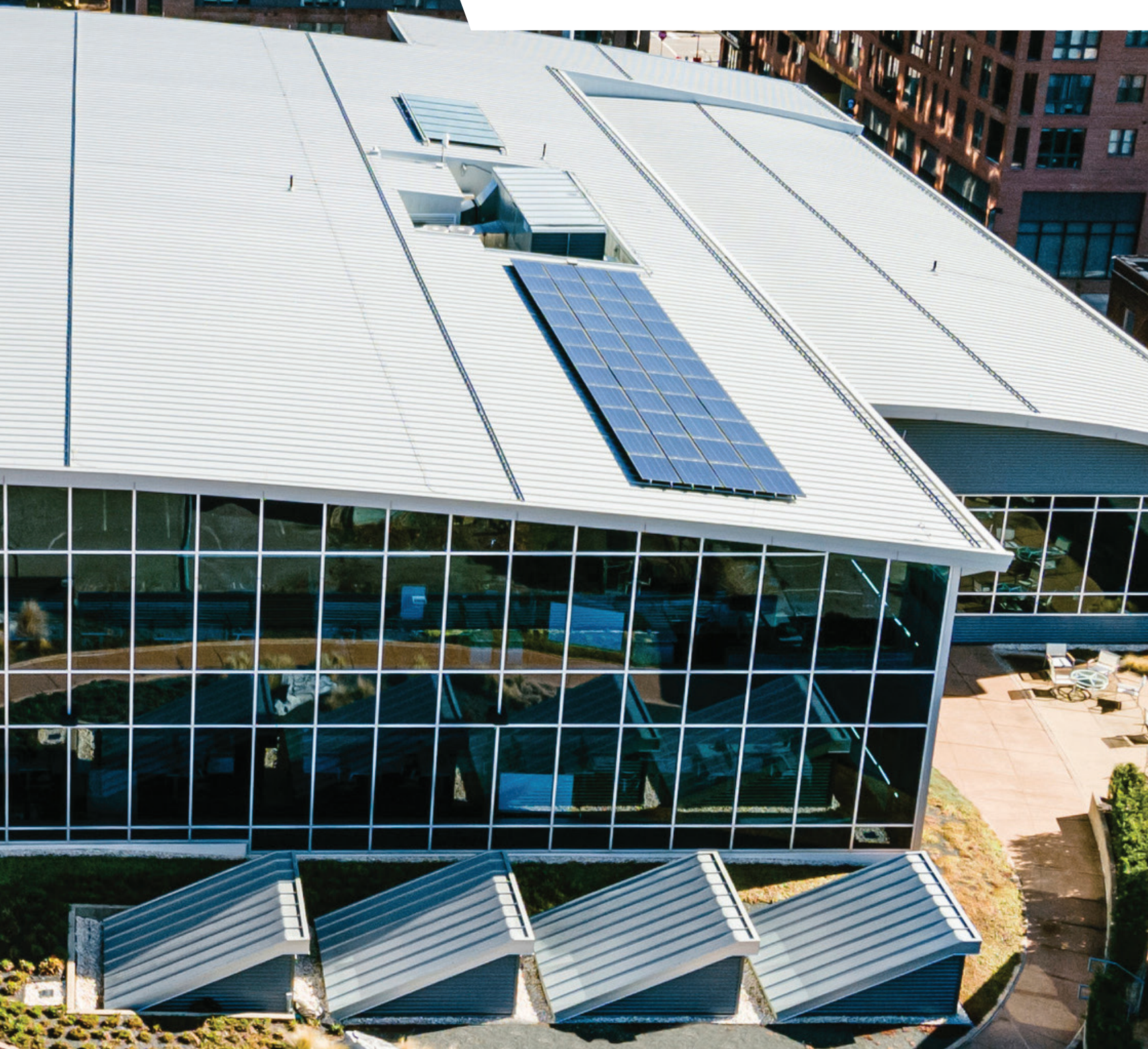




SENTRIGARD
METAL ROOFING SYSTEMS



SENTRIGARD.COM



TABLE OF CONTENTS

3	SENTRIGARD™ STORY
4	TESTING, TECHNICAL INFO, AND WARRANTIES
5	COLOR CHART
6	COATINGS, SUBSTRATES, COIL AND SHEET
7	MECHANICAL LOCK PANELS: ML100, ML150, ML200
8	SNAP LOCK PANELS: SL100, SL150, SL175
9	NAIL STRIP PANELS: NS150, NS100
10	ARCHITECTURAL WALL SYSTEMS
11	FLUSH PANELS: FP100, FPR100
12	EXPOSED FASTENER PANELS
13	5V CRIMP AND T-RIB
14	SENTRIEDGE™, ACCESSORIES, AND COMPONENTS
15	ROOFING TECHNICAL SERVICES

Front Cover Photo: Citrix Raleigh
Headquarters, Raleigh NC
Architect: Alliance Architecture
Installing Contractor: Baker Roofing
Product: 22 ga Galvalume ML150 Panel
Colors: Bright Silver

SENTRIGARD™ STORY

THE ULTIMATE IN CONTROL, FLEXIBILITY, AND INNOVATION IN CONTRACTOR-FABRICATED METAL ROOFING



From project control, panel design, and material options to rigorous testing, on-site fabrication, and technical design support, Sentrigard™ Metal Roofing Systems bring everything together. Sentrigard is a known and respected market leader in metal roofing systems with over 30 years of supplying thousands of jobs with metal, rollforming equipment, and Roofing Technical Services.

Spanning residential to commercial market needs and meeting architectural and structural specifications, Sentrigard Metal Roofing Systems offers a full selection of tested panel assemblies that ensure long-term performance for any type of building design.

Sentrigard deploys a team of Regional Business Managers to educate the market about Sentrigard products and services and to provide support and expertise to architects and roofing contractors. Sentrigard provides an ideal architectural and functional fit for a variety of building applications, both commercial and residential.

Our Sentrigard Roofing Technical Services team offers extraordinary design support to architects, engineers, general contractors and installing contractors to ensure your projects meet the most comprehensive function and exacting design requirements.

ON-SITE FABRICATION

Construction demands are tougher and timelines are tighter than ever. Job site rollforming allows panels of considerable length to be manufactured on site while reducing storage and material handling/delivery costs.

Additionally, Sentrigard Metal Roofing Systems allow the flexibility to respond to many unanticipated needs, as even the simplest jobs rarely go exactly as planned. The capacity to manufacture panels on site allows the ability to meet tough construction demands and high-quality standards.

To provide comprehensive support, Sentrigard also partners with a network of regional panel fabricators when on-site fabrication may not be an option.

With 31 PVDF resin-based colors, Sentriclad™ Architectural Metals flat sheet and coil are made from durable Galvalume® steel and aluminum substrates and are available with Kynar 500 finish. The Sentriclad family of products offers a standard long-life finish warranty.



Through the use of the Schleich Quadro PLUS and additional approved panel machines, we can provide on-site fabrication of multiple profiles with the quality normally reserved for in-plant manufacturing. This workhorse system produces specified rollformed panels for mechanical lock, snap lock, nail strip, and flush panel systems, zipping through 10 different profiles in minutes rather than hours.

The Quadro's Independent Hybrid Drive System offers the flexibility to make "starter panels" (double female, double male) and tapered panels. Every Quadro-Plus delivers options in slitting, tapering, and cutting as well as striations and ribbing attachments, notching attachments, and a digital batch controller.





TESTING, TECHNICAL INFO, AND WARRANTIES

TRIED AND TRUE

Sentrigard™ panel assemblies have passed extensive testing to ensure optimal performance in a wide range of conditions. This includes the rigorous High Velocity Hurricane Zone (HVHZ) performance criteria that tests for both wind uplift and air and water infiltration.

Sentrigard meets Florida's stringent testing requirements for structural and non-structural (architectural) metal roofing systems. Sentrigard panel assemblies are tested in accordance with the following Florida Test Application Standards (TAS):

- › TAS 100-95 - Test Procedure for Wind and Wind Driven Rain of Discontinuous Roof Systems
- › TAS 125-03 - Standard Requirements for Metal Roofing Systems.

Panel profiles that have passed both test protocols are approved for use in High Velocity Hurricane Zones. Sentrigard Metal Roofing Systems is Miami-Dade County Product Control Approved.

	HVHZ RATED	NON-HVHZ	FLORIDA PRODUCT APPROVAL	MIAMI-DADE COUNTY APPROVED	RADIUS CURVING	SOLID SUBSTRATE	OPEN FRAMING	SNAP SEAM	MECHANICAL LOCK SEAM	WEATHER TIGHT WARRANTY	CLIP	CLIPLESS	TAS 100	TAS 125
ML100	✓	✓	✓	✓	✓	✓			✓		✓		✓	✓
ML150	✓	✓	✓	✓	✓	✓			✓	✓	✓		✓	✓
ML200	✓	✓	✓	✓		✓	✓		✓	✓	✓		✓	✓
SL100	✓	✓	✓	✓		✓		✓			✓		✓	✓
SL150	✓	✓	✓	✓		✓		✓		✓	✓		✓	✓
SL175	✓	✓	✓	✓		✓	✓	✓		✓	✓		✓	✓
NS100		✓	✓			✓		✓				✓		✓
NS150	✓	✓	✓	✓		✓		✓				✓	✓	✓
FP100						✓	✓					✓		
FPR100						✓	✓					✓		



SPECIFICATIONS

- › Choose from 31 different colors of SentriClad™ Architectural Metals with custom colors available upon inquiry
- › For the majority of colors, a 70% PVDF Resin Paint System is applied to the metal substrate on a continuous, reverse roll coat paint line
- › Due to recent changes in coating system resin technology, certain colors may utilize Fluoroethylene Vinyl Ether coatings - visit www.sentrigard.com to request FEVE-specific color chips
- › Finish is a premium baked-on coating specifically designed to meet the functional and aesthetic requirements of many architectural, industrial, and commercial construction applications
- › Metal substrate availability includes GALVALUME® (AZ50) steel and 3000 series aluminum alloys
- › Primary gauges include 24 ga GALVALUME and 032/040 aluminum; also available in 22 ga and 18 ga steel and .050 and .063 aluminum SentriClad finish carries a 30-year limited warranty
- › SentriClad can be incorporated into LEED specified architecture, has earned the ENERGY STAR designation, and is available in "Cool Colors"
- › Consult our Sentrigard Regional Business Managers for availability of custom colors, anodized aluminum, copper, stainless steel, and zinc

COLOR CHART

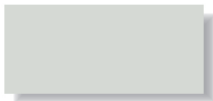
QUALITY COATINGS FOR ANY DESIGN



NOTE: Color swatches below are for reference only. Please request a color chart, fan deck, or color chip before selecting your final color.

STANDARD STOCKED ARCHITECTURAL COLOR PALETTE

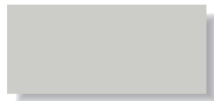
Core Colors



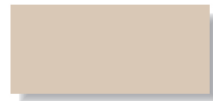
Regal White[□]
SR: .70 IE: .85 SRI: 85



Bone White[□]
SR: .68 IE: .86 SRI: 82



Stone White^Δ
SR: .62 IE: .85 SRI: 73



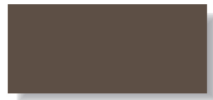
Almond^Δ
SR: .63 IE: .86 SRI: 75



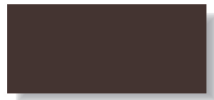
Sandstone^Δ
SR: .47 IE: .86 SRI: 53



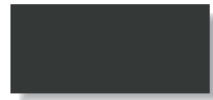
Sierra Tan
SR: .30 IE: .85 SRI: 30



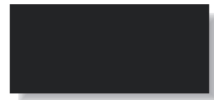
Medium Bronze
SR: .26 IE: .84 SRI: 24



Mansard Brown
SR: .29 IE: .86 SRI: 29



Dark Bronze
SR: .26 IE: .84 SRI: 25



Extra Dark Bronze -
SR: .05 IE: .89 SRI: -1



Patina Green
SR: .25 IE: .87 SRI: 24



Classic Green
SR: .25 IE: .86 SRI: 24



Hartford Green-^{}**
SR: .10 IE: .86 SRI: 4



Teal^{}**
SR: .28 IE: .87 SRI: 28



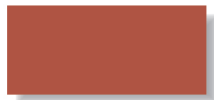
Military Blue
SR: .31 IE: .87 SRI: 32



Slate Blue
SR: .27 IE: .86 SRI: 26



Regal Blue^{}**
SR: .30 IE: .86 SRI: 30



Terra Cotta
SR: .39 IE: .85 SRI: 42



Banner Red^{}**
SR: .44 IE: .86 SRI: 49



Colonial Red
SR: .31 IE: .87 SRI: 31



Brandywine^{}**
SR: .27 IE: .87 SRI: 27



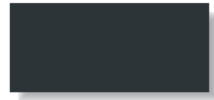
Dove Gray
SR: .49 IE: .87 SRI: 56



Slate Gray^Δ
SR: .37 IE: .86 SRI: 39



Charcoal
SR: .08 IE: .90 SRI: 4.0



Matte Black
SR: .26 IE: .86 SRI: 25

Mica Color⁺⁺



Bright Silver^Δ S66
SR: .55 IE: .77 SRI: 61



Silversmith^Δ S15
SR: .48 IE: .80 SRI: 52



Champagne S20
SR: .37 IE: .83 SRI: 38



Pewter S11
SR: .36 IE: .85 SRI: 38



Bright Copper^Δ S25
SR: .41 IE: .85 SRI: 44



Aged Copper Metallic
SR: .25 IE: .85 SRI: 23

⁺⁺ Featuring a pearlescent mica finish; subject to premium pricing. Colors shown are as close to actual colors as allowed by the printing process. Actual metal samples are available. Colors may appear different when viewed at different angles and under different lighting conditions. Due to product improvements, changes and other factors, we reserve the right to change or delete information herein without prior notice.

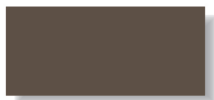
26 Gauge Low Gloss



Sierra Tan
SR: .46 IE: .87 SRI: 52



Slate Gray
SR: .37 IE: .86 SRI: 39



Medium Bronze
SR: .31 IE: .87 SRI: 32



Dark Bronze
SR: .28 IE: .86 SRI: 27



Colonial Red
SR: .31 IE: .87 SRI: 31



Classic Green
SR: .31 IE: .87 SRI: 32



Hartford Green^{}**
SR: .31 IE: .87 SRI: 32



Slate Blue
SR: .30 IE: .87 SRI: 31



Matte Black
SR: .26 IE: .86 SRI: 25



Charcoal
SR: .07 IE: .90 SRI: 2

[□] LEED[®] compliant for low slope and steep slope
^Δ LEED[®] compliant for steep slope only
PVDF - 70% polyvinylidene fluoride resin paint system

SR = Solar Reflectivity IE = Initial Emissivity SRI = Solar Reflective Index

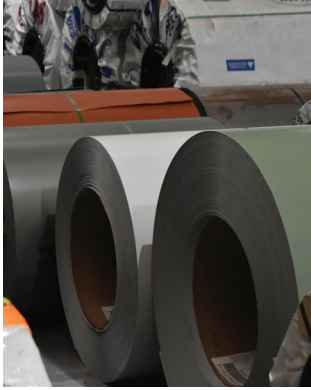
^{**} DENOTES EXOTIC COLORS AND ARE SUBJECT TO PREMIUM PRICING

Please check website for most up to date SR, IE, and SRI Values, as well as color listing and availability



COATINGS, SUBSTRATES, COIL AND SHEET

A WIDE RANGE OF OPTIONS



SENTRICLAD™ FINISH

Premium coil coating, applied on a reverse-roll coat paint line and specifically designed to meet functional and aesthetic requirements of many architectural, industrial and commercial construction applications. See Color Chart on page 5.



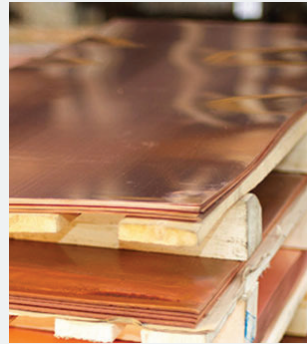
STAINLESS - SHEET

Type 304-2B stainless meets ASTM A240/240M covering austenitic alloy sheets. Type 304 (18-8 Low Carbon) recommended for welding construction where severe corrosive conditions are encountered.



GALVALUME® PLUS - SHEET & COIL

GALVALUME PLUS is a carbon steel substrate with a hot-dipped zinc-aluminum coating and a clear acrylic coating. Resists fingerprints and smudging during handling and installations. Specifications: ASTM A792-02.



COPPER COLD ROLL - SHEET & COIL

Used in general building applications such as standing seams, batten seams, flat seam roofs, flashings, soffits, fascias, mansards, copings, skylights, wall panels, bay windows, awnings, downspouts, and gutters. 16 and 20 oz standard stocked items. Freedom Grey 16 & 20 oz also available.



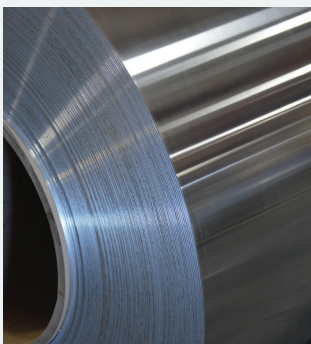
GALVANNEAL® - SHEET & COIL

Galvannealed steel requested as paintgrip sheet is produced with an A-60 coating meeting ASTM A653/653m specifications. This 100% iron-zinc alloy coating can be easily painted after normal cleaning.



ROOFINOX TCS - SHEET & COIL

Tin-Plated (Terne) 439/316 stainless steel. Material is softer and easier to seam, has a long product life, and is resistant to algae, plant roots, and airborne pollutants. Ideal for all roof types, acquires patina and has an elegant grey surface.



ALUMINUM - SHEET & COIL

ASTM B209 Standard Specification of Aluminum Alloy, Sheet, and Plate. References ANSI Standard H-35.2 Dimensional Tolerances for Aluminum.



GALVANIZED STEEL - COIL & SHEET

660 and 690 galvanized meet ASTM A653: General requirements for delivery of zinc coated (galvanized) commercial quality carbon steel sheets (14-10 ga) and lockforming quality carbon steel sheets (30-16 ga). Available in a variety of coil sizes, thicknesses and sheet lengths.

MECHANICAL LOCK

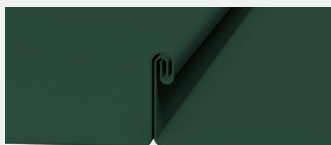
ARCHITECTURAL STANDING SEAM ROOFING SYSTEM



ML100 1" MECHANICAL LOCK PANEL

Classic low profile architectural standing seam metal roofing system. Ideal for residential and light commercial applications.

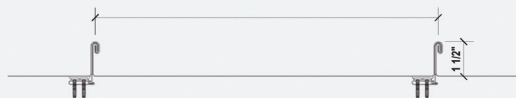
- › Minimum slope = 3":12"
- › Mechanically seamed in field
- › Structural, hydrostatic panel



ML150 1.5" MECHANICAL LOCK PANEL

Classic low profile architectural standing seam metal roofing system. Ideal for residential and light commercial applications.

- › Minimum slope = 1-1/2":12"
- › Weather tight warranty available
- › Architectural, hydrokinetic panel



ML200 2" MECHANICAL LOCK PANEL

Structural standing seam metal roofing system. Commercial profile for multiple deck and slope applications

- › Minimum slope = 1/2":12"
- › Structural, hydrostatic panel
- › Solid substrate or open framing (max. 5' OC)
- › Weather tight warranty available



FEATURES:

- › Ideal for residential and light commercial applications
- › Specially designed clip allows thermal movement
- › Tested panel for rated assemblies achieves higher performance levels
- › Mechanical locked seam for weather tight performance
- › Excellent for roofing installation requiring exotic metals such as copper and terne
- › 35 year finish warranty on Kynar 500 finish
- › Underlayment and solid substrate required
- › Mechanically seamed in field
- › Panel width from 12"-18", please consult for other availabilities

MATERIALS:

- › 24 and 26 gauge Galvalume®
- › .032" aluminum
- › 16oz copper

TEST REPORT SUMMARY

- › Miami Dade Building Code Compliance Approved
- › Florida Building Code 2020
 - › Section 1504.3.2; 1505.3; 1507.4
- › Testing per TAS 125-03 Std. Requirements for Metal Roof Systems
- › Test Assembly #6 by Underwriters Laboratory for:
 - › a) UL 580-94, per FBC, Uplift Resistance of Roof Assemblies
 - › b) UL 1897-98, per FBC, Uplift Tests for Roof Covering Systems
- › Testing per TAS 100 Wind Driven Rain Test
- › FPA #9860.3 - HVHZ - .032" Aluminum
- › FPA #9860.4 - HVHZ - 24ga
- › M-D NOA #19-0722.02 - HVHZ - 24ga
- › M-D NOA #19-0722.01 - HVHZ - .032" Aluminum

Project: Virginia Tech Animal Husbandry Barn, Blacksburg, VA
Installer: Craftsman Roofing
General Contractor: Thor Construction
Product: ML200 2" Mechanical Lock Panel
Colors: Classic Green



SNAP LOCK

ARCHITECTURAL STANDING SEAM ROOFING SYSTEM

FEATURES

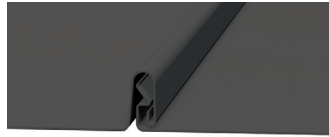
- › Low-profile architectural standing seam metal roofing system
- › Ideal for residential and light commercial applications
- › Specially designed clip allows thermal movement
- › Tested panel for rated assemblies achieves higher performance levels
- › Panel width from 12"-18", please consult for other availabilities

MATERIALS

- › 24 and 26 gauge Galvalume®
- › .032" aluminum
- › 16oz copper

TESTING

- › Miami Dade Building Code Compliance Approved
- › Florida Building Code 2020
 - › Chapter 15: Roof Assemblies
 - › Section 1504.3.2; 1505.3; 1507.4
 - › Chapter 16: Structural Design
 - › Chapter 22: Steel; Section 2209 Cold Form Steel
 - › Chapter 23: Wood
- › Testing per TAS 125-03 Std. Requirements for Metal Roof Systems
- › Test Assembly #6 by Underwriters Laboratory for:
 - › a) UL 580-94, per FBC, Uplift Resistance of Roof Assemblies
 - › b) UL 1897-98, per FBC, Uplift Tests for Roof Covering Systems
- › Testing per TAS 100 Wind Driven Rain Test
- › FPA #9860.10 - HVHZ - 24ga
- › M-D NOA #19-0722.05 - HVHZ - 24ga



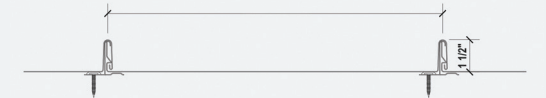
SL100 1" SNAP LOCK PANEL

- › Low profile architectural standing seam system
- › Ideal for residential and light commercial applications



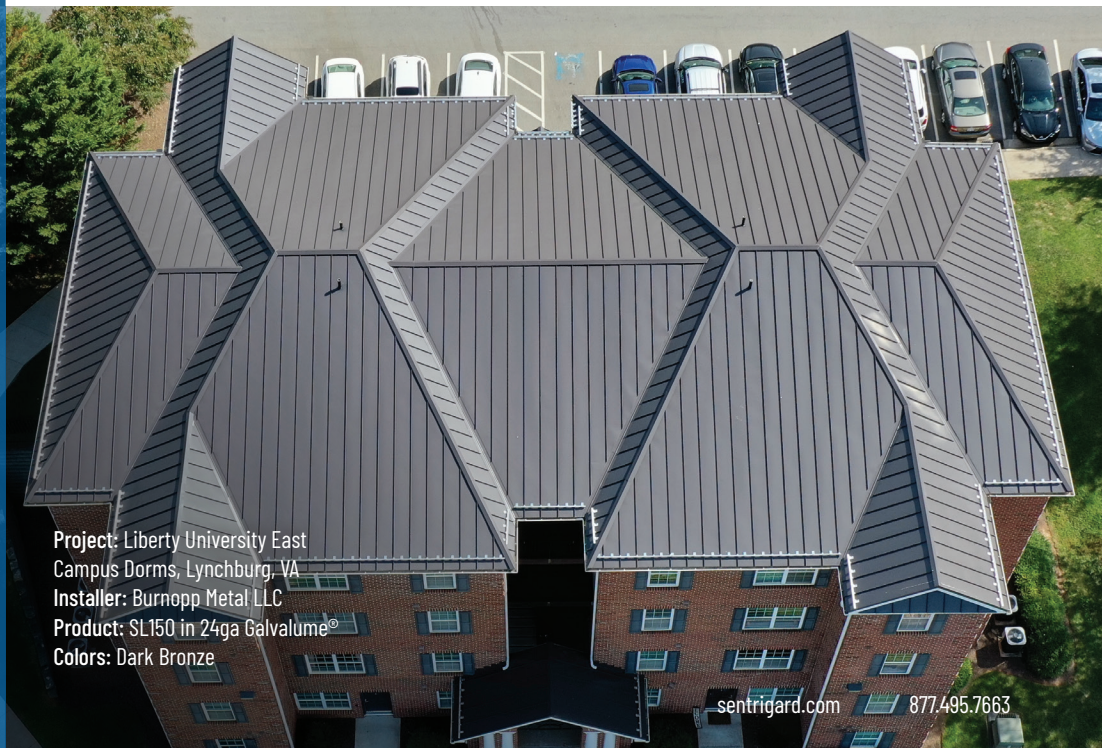
SL150 1.5" SNAP LOCK PANEL

- › Architectural standing seam system
- › Sentrigard™ Weathertight Warranty Program
- › Ideal for residential and light commercial applications



SL175 1.75" SNAP LOCK PANEL

- › Structural standing seam system
- › Sentrigard™ Weathertight Warranty Program
- › Commercial profile for multiple deck and slope applications



Project: Liberty University East
Campus Dorms, Lynchburg, VA
Installer: Burnopp Metal LLC
Product: SL150 in 24ga Galvalume®
Colors: Dark Bronze

NAIL STRIP

ARCHITECTURAL STANDING SEAM ROOFING SYSTEM



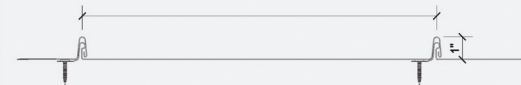
NS150 1.5" NAIL STRIP PANEL

- › Minimum Slope = 1-1/2":12"



ALSO AVAILABLE: NS100 1" NAIL STRIP PANEL

- › Minimum Slope = 3":12"



FEATURES:

- › Clipless system for fast, easy installation
- › Snap Seam – no field seaming required
- › Ideal for residential and light commercial applications
- › Architectural, hydrokinetic panel
- › Offset design ensures smooth surface at fabrication
- › 35 year finish warranty on Kynar 500 finish
- › Weather tight warranty not available
- › Underlayment and solid substrate required
- › Clipless system limits panel length to 25' +/-

MATERIALS:

- › 24 and 26 gauge Galvalume®
- › .032" aluminum
- › 16oz copper

TESTING

- › Florida Building Code 2020
 - › Chapter 15: Roof Assemblies
 - › Section 1504.3.2; 1505.3; 1507.4
 - › Chapter 16: Structural Design
 - › Chapter 22: Steel; Section 2209 Cold Form Steel
 - › Chapter 23: Wood
- › Testing per TAS 125-03 Std. Requirements for Metal Roof Systems
- › Test Assembly #6 by Underwriters Laboratory for:
 - › a) UL 580-94, per FBC, Uplift Resistance of Roof Assemblies
 - › b) UL 1897-98, per FBC, Uplift Tests for Roof Covering Systems
- › FPA #9860.7 Non HVHZ - 2



Project: Private Residence, Charlottesville, VA
Installer: McCarty Roofing
Product: NS150
Colors: Dark Bronze



ARCHITECTURAL WALL SYSTEMS

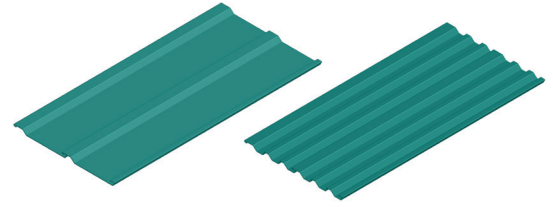
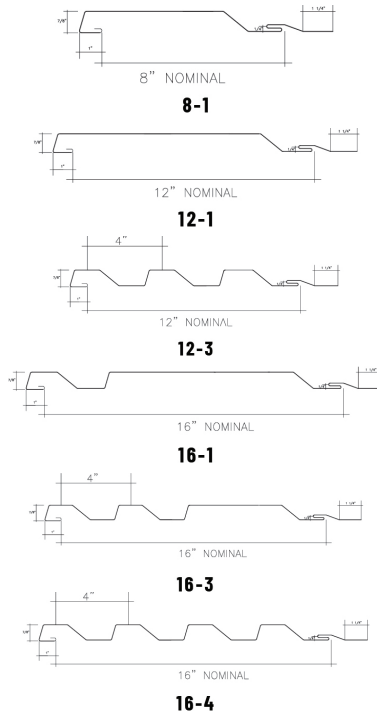
HORIZONTAL AND VERTICAL APPLICATIONS

FEATURES

- › Horizontal and vertical concealed fastener wall panel system
- › Multiple AWS panels can be integrated to create a variegated wall assembly appearance
- › Can be installed in vertical assembly
- › Available with mitered corners that allow sweeping wall expanses
- › Can be installed with or without clips
- › Min. 16 ga. Secondary Framing: Maximum – 4' on-center
- › Field Curving: Minimum radius 200'
- › Panel Length: Maximum – 40' with Clip Attachment (Longer panel lengths available upon request)

MATERIALS

- › 24 and 26 gauge Galvalume®
- › .032" aluminum
- › 16oz copper



AWS PANELS

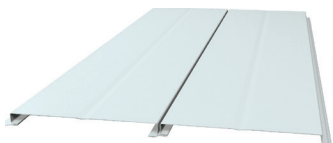
Architectural Wall Systems provide a horizontal or vertical concealed fastener wall panel system in multiple different profiles to suit many applications. Profiles feature concealed fasteners and can be installed with or without clips to allow for expansion and contraction of the panel system.

- › Air Infiltration: ASTM E283
- › Water Penetration: ASTM E331
- › Structural Performance: ASTM E330
- › 032" alum. – Maximum load- 61.6 psf
- › Dynamic Water Test: AAMA 501.1
- › No water leakage @ 25 psf
- › No water leakage at 15 psf
- › 24 ga steel – Maximum load- 112.3 psf



FLUSH PANELS

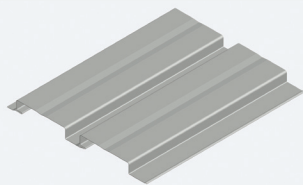
SOFFIT, MANSARD, AND WALL APPLICATIONS



FP100 1" Interlocking Flush Panel

System with smooth, flat surface and minimal gap. Complements any architectural metal roofing system and integrates well with other types of building materials.

- › Architectural wall/soffit panel



FPR100 1" Interlocking Flush Panel with Reveal

Flush panel with 1-inch wide reveal. Adds depth, texture, and additional strength to the panel profile.

- › Architectural wall/soffit panel with reveal



FEATURES:

- › Vertical or horizontal application
- › Solid substrate or open framing
- › Concealed fastener attachment - no clip required
- › 35 year finish warranty on Kynar 500 finish
- › Weather tight warranty not available
- › Underlayment not required
- › Vented or non-vented
- › Available in 6"-16" panel widths

MATERIALS:

- › 24 and 26 gauge Galvalume®
- › .032" aluminum
- › 16oz copper

TESTING

- › Miami Dade Building Code Compliance Approved
- › Florida Building Code 2020
 - › Section 1504.3.2; 1505.3; 1507.4
- › Testing per TAS 125-03 Std. Requirements for Metal Roof Systems
- › Test Assembly #6 by Underwriters Laboratory for:
 - › a) UL 580-94, per FBC, Uplift Resistance of Roof Assemblies
 - › b) UL 1897-98, per FBC, Uplift Tests for Roof Covering Systems
- › Testing per TAS 100 Wind Driven Rain Test
- › FPA #9860.3 - HVHZ - .032" Aluminum
- › FPA #9860.4 - HVHZ - 24ga
- › M-D NOA #19-0722.02 - HVHZ - 24ga

Project: Traditional Roofing
Headquarters, Lynchburg, VA
Product: FPR100
Colors: Dove Gray



EXPOSED FASTENER PANELS

ROOF AND WALL PANELS

FEATURES

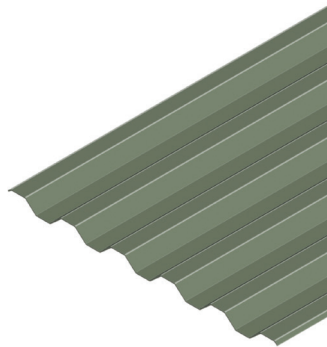
- › Vertical and horizontal applications
- › Superior strength-to-weight ratio and spanning capabilities
- › Acts as a canvas on the exterior
- › Curving options available
- › Mitered corners available
- › Wall and roof variations available
- › Minimum panel length: 45'
- › Maximum panel length: 6'

MATERIALS

- › .032" aluminum
- › .040" aluminum
- › .050" aluminum
- › 18 gauge steel
- › 20 gauge steel
- › 22 gauge steel
- › 24 gauge steel
- › 26 gauge steel

TESTING

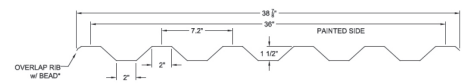
- › Class 4 Impact: UL2218
- › Class A fire: UL790



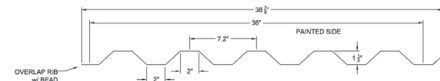
7.2" RIB

Exposed fastener panels that can follow every curve of your design. Suitable for wall and roof applications. In siding only, can be applied in vertical and horizontal orientation.

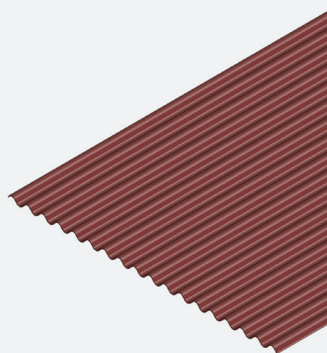
- › Perforation available upon request
- › Factory curving: Minimum radius 10'
- › Roof slope minimum required: 2:12
- › Purlin spacing: Maximum 5' on-center
- › Panel length: Minimum 4', Maximum 65'
- › Wind uplift: UL580



Roof & Wall Application



Wall Only Application



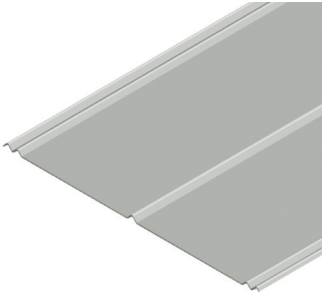
7/8" CORRUGATED

Exposed fastener panels with multiple coverage and spacing options to choose from. Can follow every curve of your design where needed when installed vertically. Suitable for use on both wall and roof applications.

- › Roof slope minimum required: 2 1/2:12
- › Factory curving: Minimum radius 15'
- › Panel length: Minimum 6', Maximum 45'
- › Panel width: Minimum 26", Maximum 48"
- › Wind uplift and fastener spacing calculations are available upon request



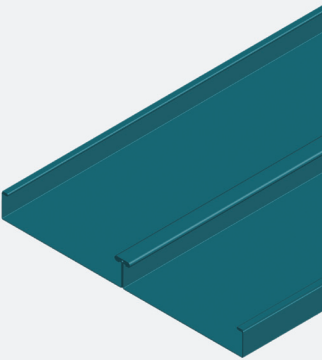
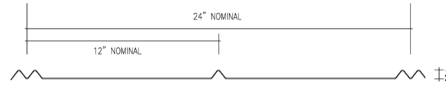
5V CRIMP AND T-RIB



5V CRIMP

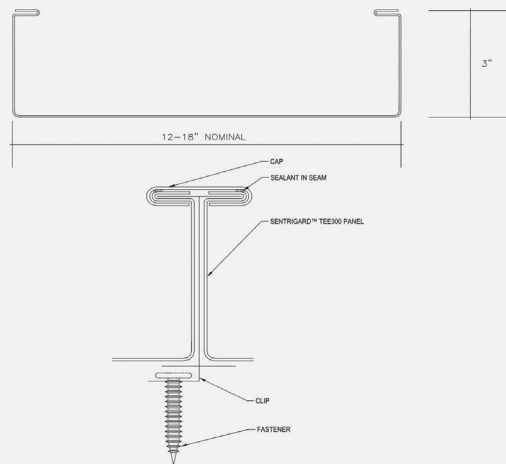
An economical residential roof panel system and design component. Blends well with other building materials. Low profile allows ease of flashing detail design and installation. Ideal for natural, unpainted metal applications.

- › Minimum slope: 3":12"



T-RIB

- › Structural standing seam metal roofing system
- › Ideal for residential and commercial applications
- › Specially designed panel and clip allows thermal movement
- › Minimum slope = 1-1/2":12" (1-1/4":12" with prior approval)
- › Actual panel width: 12" to 18"



FEATURES:

- › 35 year finish warranty on Kynar 500
- › Underlayment required
- › Solid substrate required
- › Architectural, hydrokinetic panel
- › Exposed fastener - no field seaming required

MATERIALS:

- › 26 gauge Galvalume®

TESTING

- › Florida Building Code 2020
 - › Chapter 15: Roof Assemblies
 - › Section 1504.3.2; 1505.3; 1507.4
 - › Chapter 16: Structural Design
 - › Chapter 23: Wood
- › TAS 125-03 Std. Requirements for Metal Roof Systems
- › Test Assembly #6 by Underwriters Laboratory for
 - › a) UL 580-06, per FBC, Uplift Resistance of Roof Assemblies
 - › b) UL 1897-12, per FBC, Uplift Tests for Roof Covering Systems
- › Testing per TAS 100 Wind Driven Rain Test
- › FPA #41665.5 - NON-HVHZ - 26ga



SENTRIEDGE™, ACCESSORIES, AND COMPONENTS

For the desired finished look, Senticlad™ offers flashing, trim and edge metals in a variety of substrates, profiles, and finishes.



Sentriedge perimeter edge metal offering is ANSI SPRI ES-1 tested and approved and includes:

- > 4" Face Edge Metal
 - > 6" Face Edge Metal
- > 8" Face Edge Metal
 - > 16" Coping
- > 20" Coping
 - > 24" Coping



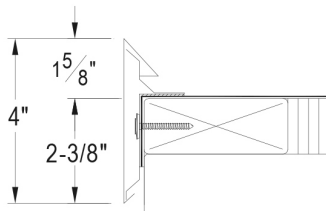
Sentriedge

Specify Sentriedge perimeter edge metals to secure the roof of your next project and ensure the installation's long-term integrity. Featuring premium Senticlad Architectural Metal flat sheet, Sentriedge perimeter edge metals are offered in compliance with ANSI SPRI ES-1 test requirements, and are available through certified fabricating customer partners.

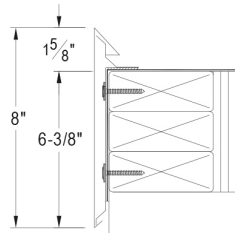
Flashing and Trim

Fabricated flashing and trim components are available for the Sentrigard™ roof or wall panel systems. Sentrigard flashing and trim complete the wall or roof panel system with crisp, clean lines designed for functionality and architectural purpose. These items can be selected from standard Sentrigard flashing and trim profiles in 24ga Galvalume® or .032" and .040" aluminum. Custom flashing profiles and shapes are available upon request along with other substrates and material gauges. Consult your account manager for information on standard availability, as well as custom inquiries.

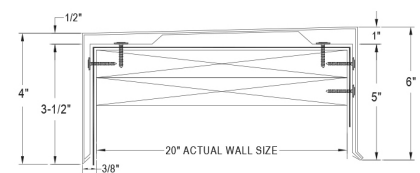
4" Face Edge Metal



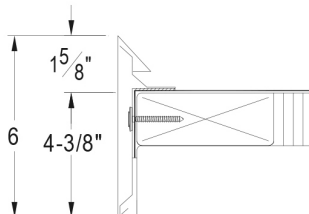
8" Face Edge Metal



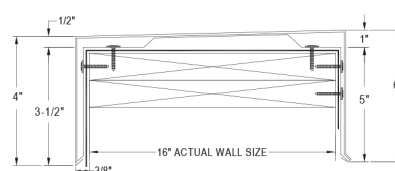
20 inch Coping



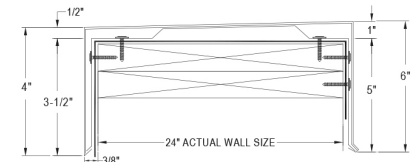
6" Face Edge Metal



16" Coping



24 inch Coping

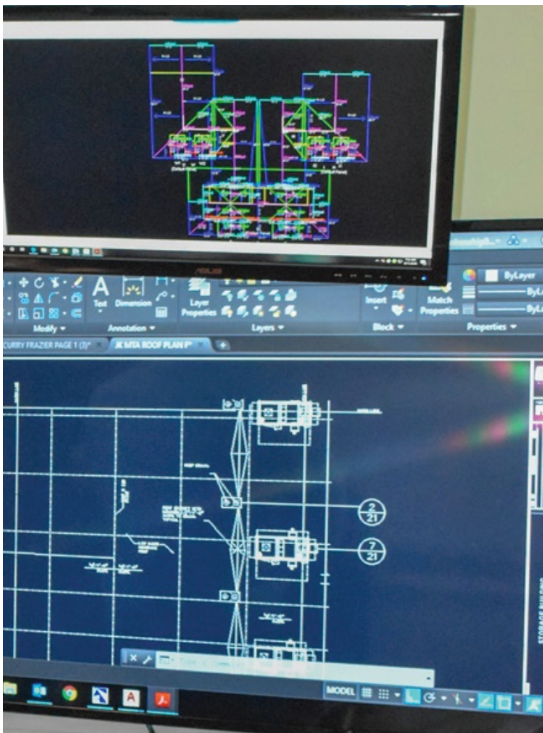
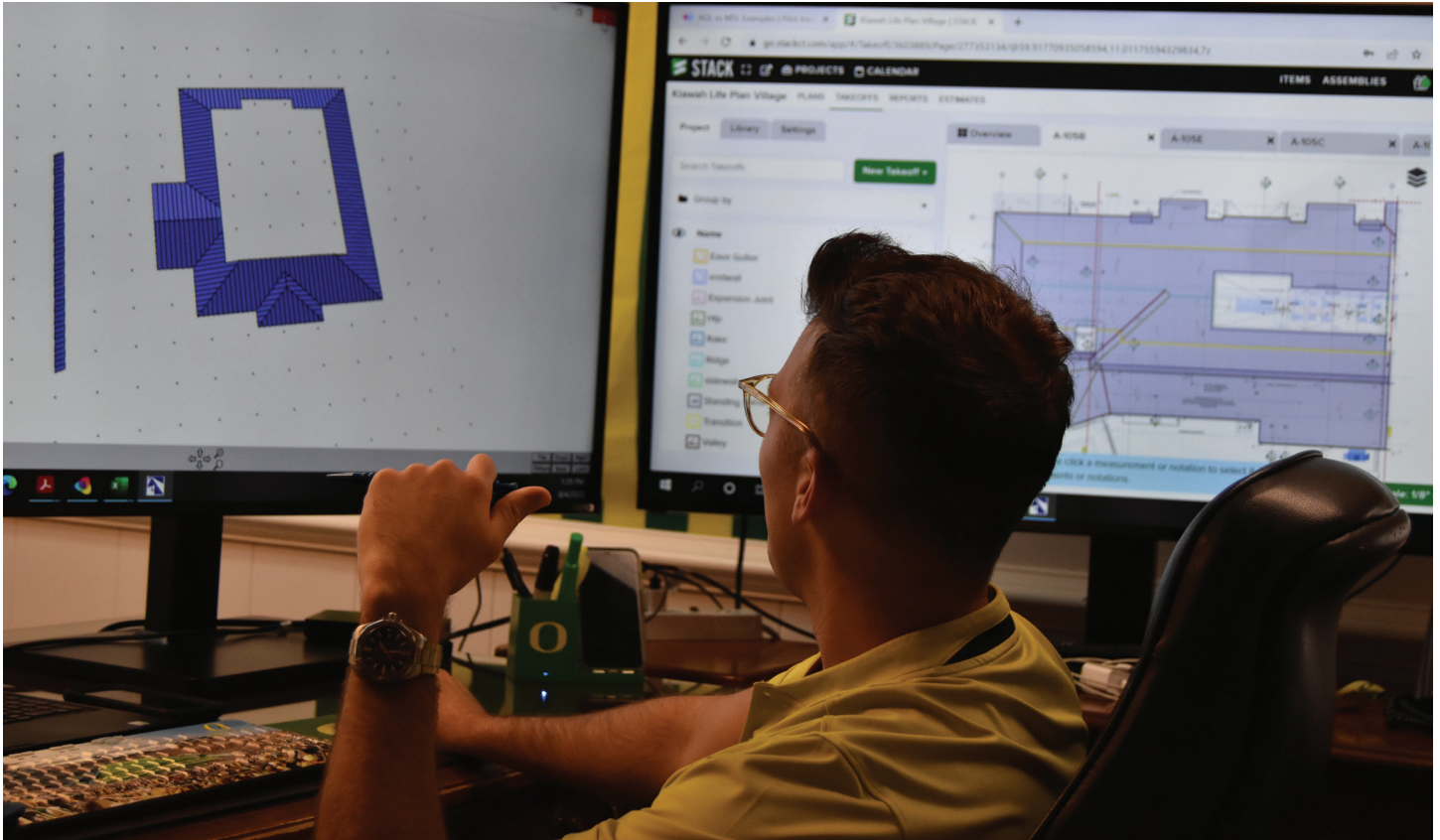


ROOFING TECHNICAL SERVICES

THE GO-TO RESOURCE FOR YOUR DESIGN TEAM



Contact your account manager, or contact us at 877-495-7663 to find out how the Roofing Technical Services team can support your unique project.



Shop Drawings

Service includes the materials, sizes, dimensions and installation procedures proposed for use on a specific project. The typical lead time is 2-3 weeks depending on the volume of jobs in the queue and provided the information submitted is accurate, concise and complete.

Site-Specific Engineering Calculation Services

Our technical staff is responsible for product testing and providing fabricating contractors with sealed and stamped engineering documents, calculations, and shop drawings specific to the project. Engineering services include information such as wind uplift, negative pressures, and clip spacing. Complete turnaround for engineering and shop drawings on a project is just two weeks. Project submittal packages are available upon request.

Metal Take-Off

Service includes a cut list of panels, total surface area, total linear footage of flashings, and a dimensioned roof layout plan including panel lengths and placement. It is especially valuable in estimating and bidding complex metal roofing and wall panel assemblies. Takeoffs may be generated from printed plans, digital plans, hand-drawn sketches, CAD drawings, internet plan room files (F.W. Dodge, iSqFt, etc.), satellite and aerial images, or other materials that show a dimension or scaled roof layout. The typical lead time is 2-3 days, provided the information submitted is accurate, concise and complete.



citrix



SENTRIGARD
METAL ROOFING SYSTEMS

877-495-7663 • sentrigard.com

65 10th Street, Lynchburg, VA 24504